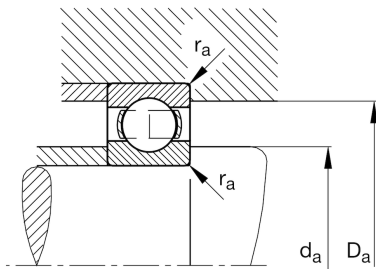
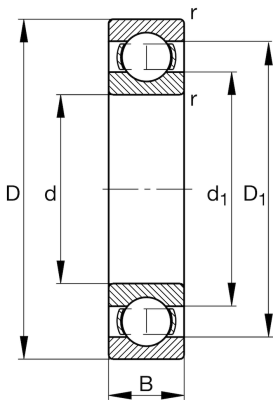


**FAG****6406-A**

Deep groove ball bearing

Schaeffler ID:  
0686835700000Deep groove ball bearing 64...-A, single  
row, steel sheet metal cage

## Technical information

**Main Dimensions & Performance Data**

d	30 mm	Bore diameter
D	90 mm	Outside diameter
B	23 mm	Width
$C_r$	42.500 N	Basic dynamic load rating, radial
$C_{0r}$	23.200 N	Basic static load rating, radial
$C_{ur}$	1.350 N	Fatigue load limit, radial
$n_G$	11.000 1/min	Limiting speed
$n_{gr}$	9.500 1/min	Reference speed
	0,722 kg	{Weight}

**Mounting dimensions**

$d_{a \min}$	41 mm	Minimum diameter shaft shoulder
$D_{a \max}$	79 mm	Maximum diameter of housing shoulder
$r_{a \max}$	1,5 mm	Maximum fillet radius

**Dimensions**

$r_{\min}$	1,5 mm	Minimum chamfer dimension
$D_1$	71,2 mm	Shoulder diameter outer ring
$d_1$	50,1 mm	Shoulder diameter inner ring

**Temperature range**

$T_{\min}$	-30 °C	Operating temperature min.
$T_{\max}$	120 °C	Operating temperature max.

**Calculation factors**

$f_0$	11,9	Calculation factor
-------	------	--------------------