

360(E)

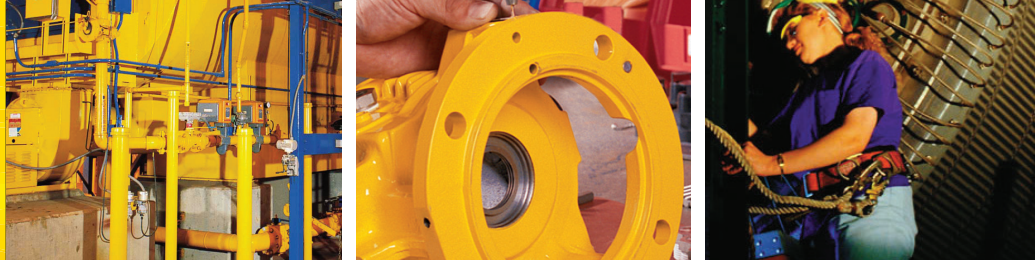
PHOSPHATE-FREE CLEANER

APPLICATION AREAS

- Floors/Walls
- Machinery & Parts
- Concrete
- Food Processing Equipment
- Marine Decks/Hulls



CAUTION: DO NOT USE ON ALUMINUM



PRODUCT DATA SHEET

KEY FEATURES AND BENEFITS

- Phosphate-Free
- Biodegradable
- Non-flammable
- Solvent free
- Environmentally safe
- NSF A1, A4 registration number 157900
- Water soluble
- Saponifies animal and vegetable fats

PACKAGING

20L
208L
1000L

DIRECTIONS

Dilute to desired strength. Apply with mop, brush, sponge, cloth or spray. Allow a minute for deep penetration. If necessary, use stiff brush or cloth to loosen tough dirt.

Rinse with water. Reapply as needed. When used to clean aluminum, rinse quickly to avoid staining. On plastics and paints, test a small area for compatibility before using.

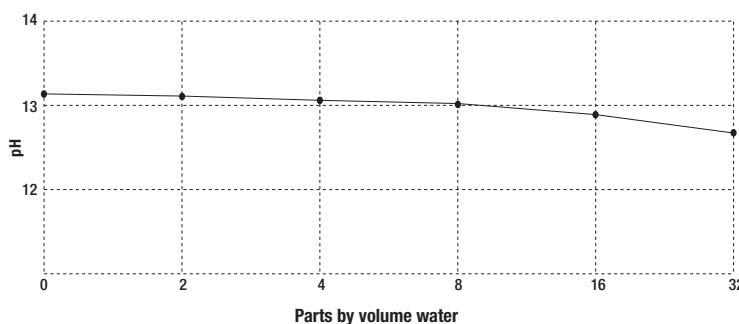
DESCRIPTION

Chesterton® 360(E) Phosphate-Free Cleaner is a powerful industrial strength hard surface cleaner designed for use in environmentally sensitive areas. Chesterton 360(E) Phosphate-Free Cleaner is concentrated. It will penetrate, lift, emulsify and disperse dirt, oil, grease, mildew and other types of soils from a variety of hard surfaces. It is a versatile product that has hundreds of applications in the industrial and marine markets. It can be used to clean food processing equipment in all federally inspected meat and poultry plants.

Chesterton 360(E) Phosphate-Free Cleaner is a high alkaline cleaner containing only non-phosphate builders and surfactants.

Because it does not contain these bio-stimulants, it will not contribute to eutrophication of the waterways.

pH vs. Dilution



Recommended Minimum Concentrations (In Water)

General Cleaning	7%
Heavy Cleaning	15%
Light Cleaning	2%
Crayon & Felt Tip Marker	Concentrated
Painted Surfaces	7%
Acrylic Floor Finishes	10%
Built Up Acrylic Floor Finishes	15%

Typical Physical Properties

Appearance	Transparent, Blue-Green Liquid
Flash Point, Closed Cup (ASTM D 93-85)	None
Specific Gravity	1.1
Solubility in Water	Complete
pH (Concentrated)	13.1
Density	1,1 kg/l
Freeze Thaw Stability	Passed 6 cycles

Before using this product, please refer to Safety Data Sheet (SDS).